



Established in 1944, Martin Engineering is the leading international developer, manufacturer and supplier of innovations to make the handling of bulk materials cleaner, safe and more productive. Martin offers technologies that boost flow, reduce dust and spillage, extend component life and reduce downtime, resulting in improved operating environment and increased profitability.

**CONVEYOR
PRODUCTS**



FLOW AIDS



**VIBRATION
SOLUTIONS**



**SERVICE &
TRAINING**



MARTIN BELT TRACKER

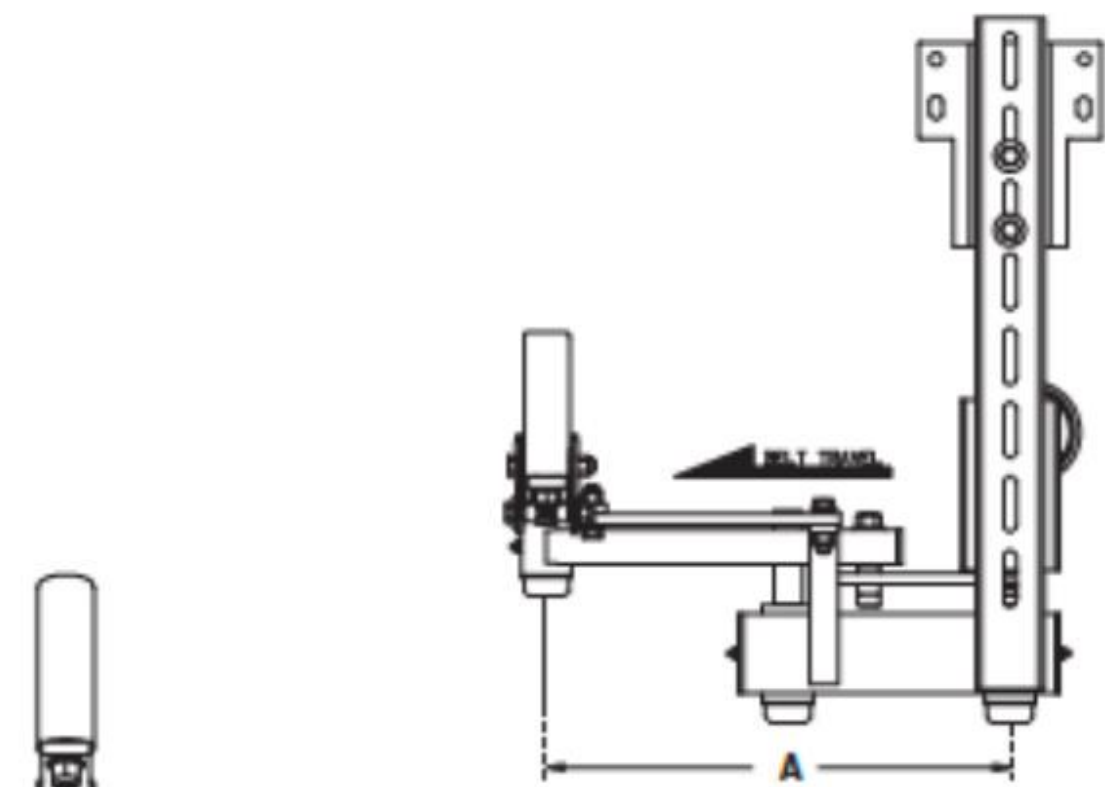
The Martin® Tracker™ provides immediate, continuous precision adjustment of wandering conveyor belts. The Martin® Tracker™ Belt Tracking System works where other belt training devices fail to reduce edge damage, prevent spillage, and extend belt life.

Available in Lower Units for the conveyor's return side and Upper Units for installation on the carrying side of the conveyor, Martin® Tracker units are available in three models to match application conditions.

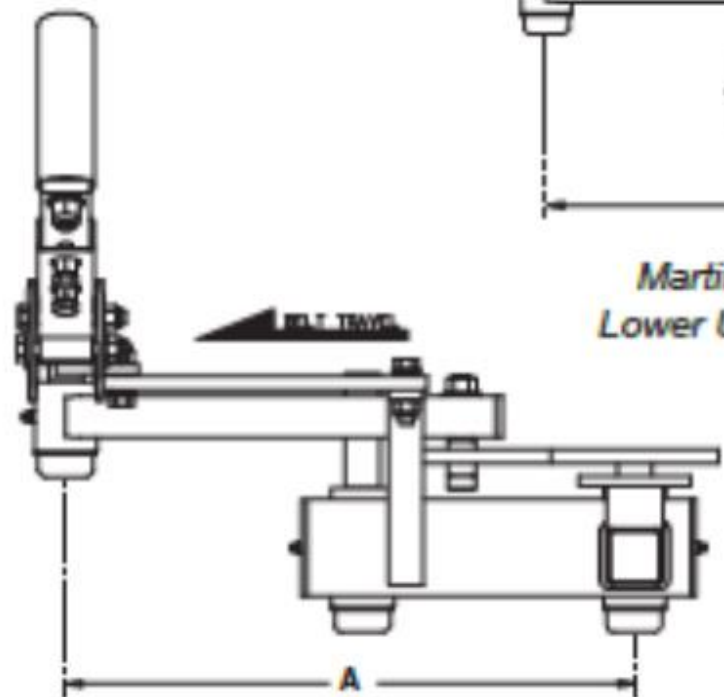
INSTALLATION GUIDELINES

To keep the belt centered in the loading zone, Martin Engineering recommends the installation of one Martin® Tracker™ Lower Unit on the conveyor's return side at a point approximately five times the belt width before the belt reaches the tail pulley. A Martin® Tracker™ Upper Unit should be installed after the load zone on belts wider than 42 inches (1000 mm). Additional units may be needed to keep the belt tracking perfectly.





*Martin® Tracker™
Lower Unit Assembly**



*Martin® Tracker™
Upper Unit Assembly*

DUTY RATING

Standard-Duty

The Martin® Tracker™ is designed for applications under typical industrial material handling conditions.

Heavy-Duty

The Martin® Tracker™ HD is designed to withstand the stress associated with wider, thicker belts moving at higher speeds and carrying heavier loads.

Extra Heavy-Duty

The Martin® Tracker™ XHD is engineered to survive in the most rugged of applications.

MARTIN TRACKER REVERSING



The Martin® Tracker™ Reversing provides immediate, continuous, precision adjustment of hard-to-track reversing conveyors. It effectively centers the belt regardless of the direction of travel.

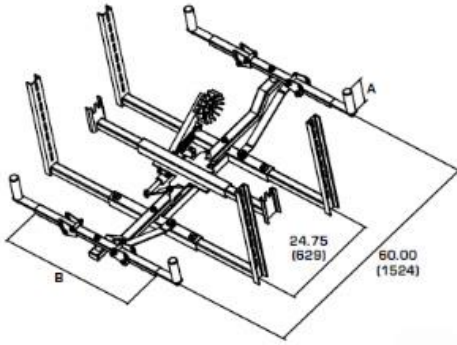
The Martin® Tracker™ Reversing features sensing rollers and lever arms on both ends of the unit. It employs a stainless steel lamella or paddle wheel to sense the direction of belt travel and activate the sensing rollers on the proper end of the unit.

The Martin® Tracker™ Reversing is available in Lower Units for installation on the return side of the belt and Upper Units for use on the conveyor's carrying side.

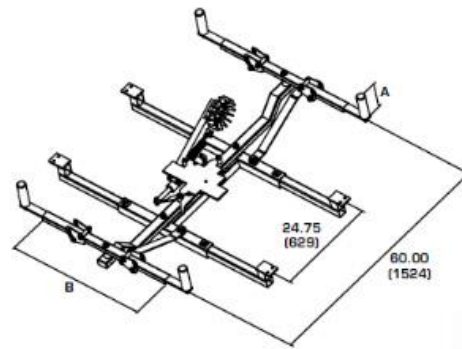
INSTALLATION GUIDELINES

To keep the belt centered in a reversing conveyor's loading zones, Martin Engineering recommends the installation of one Martin® Tracker™ Reversing at the entry and at the exit of each loading point on the conveyor. Additional units may be required to keep the belt tracking perfectly.

Lower Unit



Upper Unit



AIR CYLINDER RETROFIT KIT

Replace the paddle wheel sensing mechanism on the Martin® Tracker™ Reversing with an air operated cylinder to activate the sensing rollers on the proper end of the unit when belt direction changes.



PROAID

IDCO Industrial Estate

Jharsuguda-768203

E-mail: sales@proaid.in

Website- www.proaid.in

Mob.-7894468774